

Flygt Advanced LPSS Package

Flygt Advanced LPSS Package is a complete low pressure sewer system optimized for local requirements.

Optimal pump station

The Flygt Advanced Package handles wastewater from households to commercial building applications. For the best pumping reliability, the station is equipped with a Flygt M 3068 progressive cavity grinder pump, in a chop-hoop filament wound prefabricated fiberglass reinforced polyester (FRP) lift station.

Quick installation

The Flygt FRP station is a complete package for immediate installation upon delivery. With a built-in outlet connection, it easily connects to the electrical power supply of the house or building.

Height flexibility

The height of the Flygt FRP station offers great flexibility and is available in depths from 6' to 16'.

Adaptable to loads/weight

A robust, flat access cover can support pedestrian traffic and, upon request, vehicular traffic.

M 3068 Progressive Cavity Pump

The industrial designed Flygt M 3068 progressive cavity

grinder pump handles solids and fibers with ease by providing optimal starting torque that ensures reliable operation.

Flygt FGC211 Control

The FGC211 includes vital functions for pump control in LPSS such as level/current measurement, alarms and statistics. Additional functions include auto/forced/blocked mode, start/stop delay, run limitations, and maintenance runs. The FGC211 is expandable to incorporate an inline pressure sensor and/or flush timer to help avoid upset system conditions.

Flygt LTU301

Pneumatic pressure sensor with open bell, this measuring probe is connected by an air tube to a pressure sensor which generates an analog signal that is transmitted to the Flygt FGC211 Controller.

Local service and support

The Flygt Advanced LPSS Grade LPSS Package comes with a solid warranty as well as local service and support through our sales companies, distributors and service partners.

To find your local Flygt representative, visit our website www.flygtus.com.

Standard components

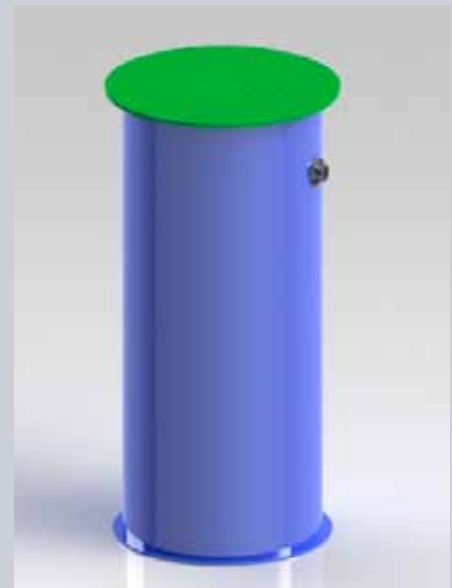
- n Flygt FRP pump station
- n Flygt M 3068 progressive cavity grinder pump
- n Flygt FGC211 LPSS pump controller
- n Flygt LTU 301 pneumatic pressure sensor



Flygt LTU 301



Flygt M 3068.175

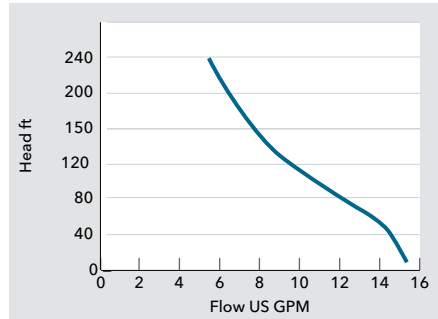


Flygt FRP

Flygt M 3068 Progressive Cavity Grinder Pump



Performance data



Technical data

	M 3068.175
Impeller No.	450
Discharge	1"
Rated power	1.7HP
Number of phases	1
Voltage	230
Rated current (A)	8.1
Weight	84 lbs.

Flygt Monitoring & Control



Technical data

	Flygt FGC211 Control Panel
No. of pumps	1
Power supply	230volt/60Hz/1 phase
Main fuse	(A) 10
Size (W×H×D in.)	14"x 12"x 6"
Functions	Status indication, level information, alarm log, running hours, number of starts, pump/motor protection
Annunciation	Local Alarm light & Buzzer



Flygt LTU 301

Technical data

	Flygt LTU301 Pneumatic Level Sensor
Output signal	4-20mA
Supply voltage	18-25VDC, 3 wire system
Temperature range	-4 to 122°F
Transmission length/Max tube length	66'
Measurement range	0-8'
Connection fitting/nipple	1/4" pneumatic tube

Flygt FRP Pump Station

Technical data

	Flygt Simplex Grinder Stations
Installation depth	6'-16' depths
Sump volume	141-588 gallons
Station weight	232-452 lbs.
Diameter	24"/30"
Discharge depths	3' for 6' deep basin - 4' for others. Consult factory for depths greater than 8'.
Access Cover	Solid fiberglass non-skid cover
Guide Rails	Stainless steel

Dimensions

